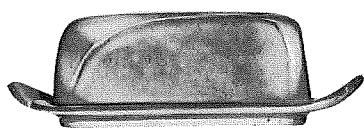
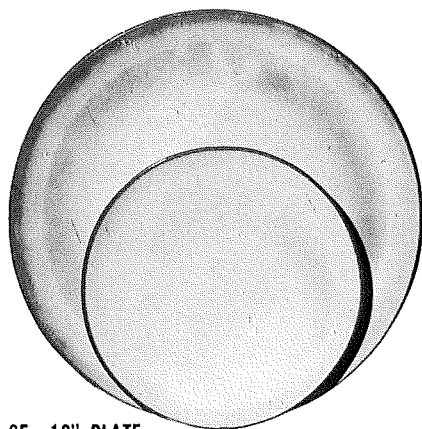


THE WESTWIND COLLECTION



4K—BUTTER DISH



6F—10" PLATE
6G—7" PLATE



* 6B—SUGAR WITH LID

* 6AB—CREAM & SUGAR SET



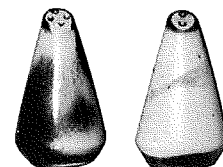
* 6A—9 OZ. CREAMER



* 6U—18 OZ. BAKER FOR TWO
A COVERED CANDY DISH



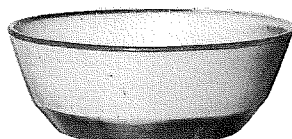
** 6C—CUP
6E—5" WELLED SAUCER



* 6H—SALT & PEPPER



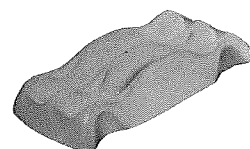
* 6J—2 CUP TEAPOT



6X—14 OZ. BOWL



* 81—1 QT. PITCHER



* 249 TACO HOLDER
BOXED 2 PER BOX



* 6V—2½ QT. BAKER
* 6V/W BAKER & WARMER SET

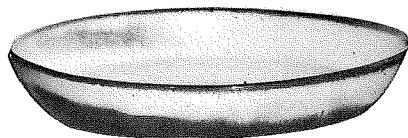


* 6T—6 CUP TEAPOT

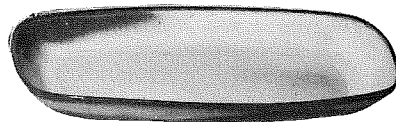


* 80—2 QT. PITCHER

COLORS AVAILABLE
BLACK
COUNTRY BLUE
CABERNET
NAVY
TEAL
WHITE
BLACK/TC
NAVY/TC
TEAL/TC
WHITE/TC



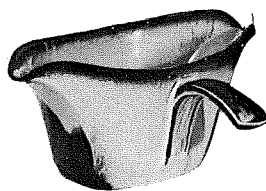
* 91—10" BAKING DISH



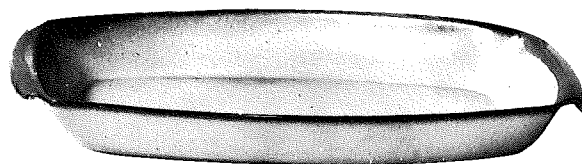
* 5QS—13" STEAK PLATE (SHALLOW PLATTER)
* 6P—11" STEAK PLATE
* 5PS—9" TRAY



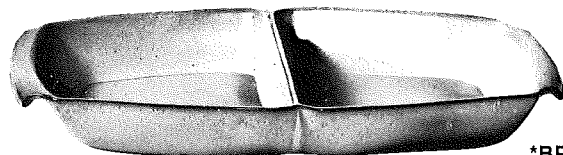
* 6N—1 QT. BOWL



* 6S—2 SPOUT GRAVY



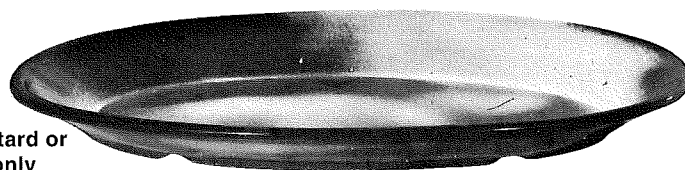
* 5P—17" DEEP PLATTER * 5Q—13" DEEP PLATTER



* 5QD—13" DIVIDED BOWL



*BP-6 oz. Bean Pot, Custard or
chip-dip- Solid colors only
NO Terra Cotta



* TP—17" OVAL PLATTER